

Broad Marsh Bus Station and Car Park

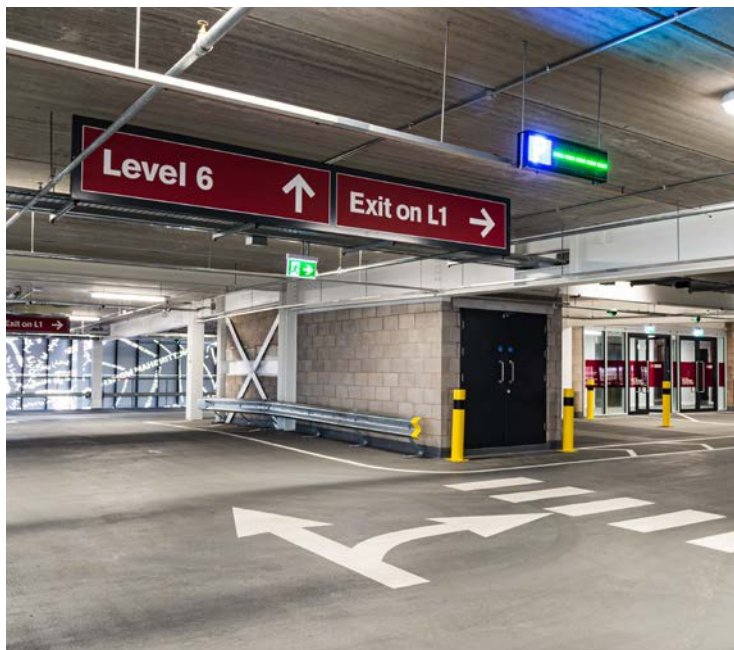
Broad Marsh Bus Station and Car Park

- Case Study

xsign were appointed by contractor, Galliford Try and worked with architect Leonard Design Architects to manufacture and install an external and internal signage scheme at the brand new Broad Marsh Bus Station and Car Park in Nottingham city centre.

Externally, we have provided 3D, illuminated built-up letters with white opal acrylic faces and stainless steel returns. The Nottingham City Council logo features as a cut vinyl graphic to glass manifestation. Additionally, we have provided a 10m wide aluminium illuminated gantry sign for the entrance to the car park.

Internally, we manufactured aluminium cut letters with digitally printed graphics on the floor levels, panel signs.





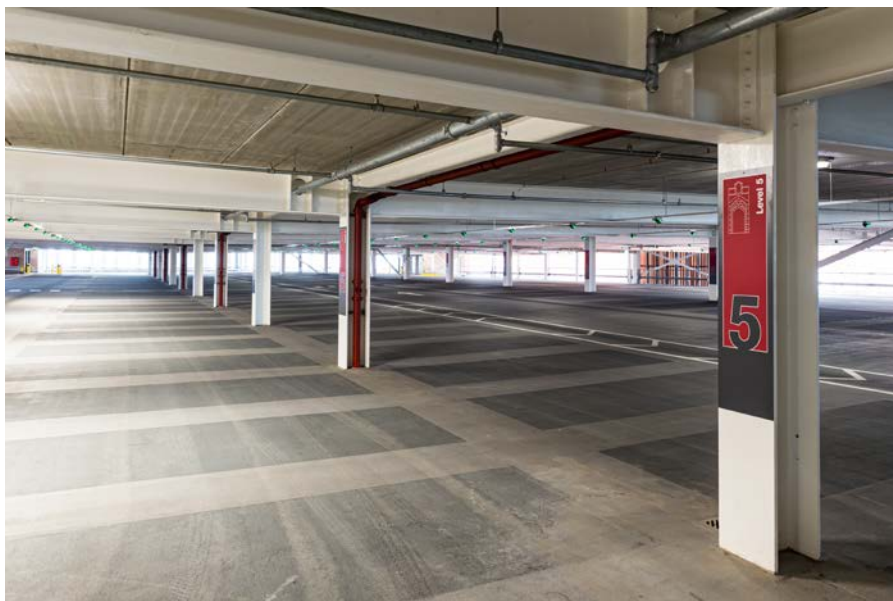
In the Bus Station, we have provided aluminium panels with digitally printed graphics to denote the floor levels in a range of colours across the floors.

The Broad Marsh Car Park entrance features an illuminated fabricated aluminium gantry sign. The letters are fret cut from the sign case and routed with push through white opal acrylic and surface decoration.



Digitally printed one-piece wall graphics feature in the lift lobby on all floor levels, with different colour schemes and themes

In the Bus Station we have provided double-sided digitally printed suspended signage to aid wayfinding and navigation.



In the car park, a grey band aluminium strip has been mechanically-fixed to columns, with digitally printed vinyl graphics applied to the surface.

Throughout the floor levels, we have provided digitally-printed manifestations applied to the glass.

